

The logo features the word "WALMI" in a bold, blue, sans-serif font, centered within a white circle. This circle is surrounded by a thick, blue, 3D-style ring that has a slight shadow and a gradient. The entire logo is set against a background of light blue curved lines that sweep across the page.

**WALMI**

**SMALL ENGINE'S AIR FILTERS  
CATALOGO**



# ENGINE / EQUIPMENT MANUFACTURER'S INDEX



Walmi part #	Manufacturer	Sheet	Walmi part #	Manufacturer	Sheet
WPA-020	B&S 491384	3	WX-081	B&S 392308	1
WPA-100-153	B&S 499486	4	WX-085	B&S 493909	3
WPA-100-160	Kawasaki 11013-7002	8	WX-089	B&S 493910	3
WPA-100-162	Toro 136-7802, 127-9252	15	WX-093	B&S 690610	4
WPA-100-500	Wacker 0114792	15	WX-100-024	Kohler 230840	9
WPA-1008-1	Tecumseh 37360	14	WX-102-119	B&S 692519	5
WPA-102-008	B&S 792105	5	WX-102-851	B&S 593260	4
WPA-102-024	B&S 494511	3	WX-107	Kohler 4708301	10
WPA-102-153	Honda 17211-ZG9-800	8	WX-115	Tecumseh 33268	13
WPA-111	Kohler 15 083 01	10	WX-131	B&S 392642	1
WPA-1237	Weber 02100458 & 041 000 757	15	WX-139	Homelite 49512	7
WPA-226	B&S 710266	5	WX-149	Onan 140-1228	11
WPA-228	Stihl 4223 141 0300	13	WX-156	Onan 140-0495	11
WPA-230	B&S 496077	3	WX-161	Homelite 46073	7
WPA-26855	E-Z-Go 26855G01	7	WX-164	B&S 394019	2
WPA-293	Echo 13030508360	6	WX-184	B&S 494586	3
WPA-3062	Wacker 5200003062	15	WX-198	B&S 393725	1
WPA-354	Kawasaki 11013-7017	8	WX-214	B&S 396424	2
WPA-382	Honda 17211-ZG9-M000	8	WX-222	Tecumseh 35066	13
WPA-412	Tecumseh 429778, 450247	14	WX-279	Stihl 315530	12
WPA-4134	Stihl 4134 141 0300B	12	WX-285	Tecumseh 34782B	15
WPA-450	Tecumseh 36046	13	WX-317	Tecumseh 36745	14
WPA-533	B&S 397795	2	WX-319	Onan 140-1911	12
WPA-541	B&S 399877	2	WX-343	Shindaiwa 68206-82400	12
WPA-549	B&S 399959	2	WX-344	Shindaiwa 68206-80056	12
WPA-569	Echo A226000031	6	WX-453	B&S 392286	1
WPA-640	B&S 797007	5	WX-457	Tecumseh 35850A	15
WPA-659	Club Car 1015426	6	WX-487	B&S 393406	1
WPA-663	E-Z-Go 72144G01	7	WX-49064-2006	Kawasaki 49064-2006	9
WPA-7010	Kawasaki 11029-7010	8	WX-622	Kawasaki 11029-7002	8
WPA-7016	Kawasaki 11029-7016	9	WX-709	Stihl 4201 141 0300	12
WPA-7193	Wacker 0157193	15	WX-758	Kohler 2408303	10
WPA-796031	B&S 594201	4	WX-784	Honda 17210-ZE1-505	7
WPA-796032	B&S 591583	4	WX-812	Tecumseh 36905	14
WPA-875	B&S 795115	5	WX-8303	Kohler 1708303-S	11
WPA-887	B&S 805113	6	WX-8304	Kohler 1808304-S	11
WPA-929	B&S 793569	5	WX-8307	Kohler 1708307-S	11
WX-008	Tecumseh 30727	13	WX-871	B&S 692446	4
WX-016	Kohler 47 083 03	11	WX-891	B&S 399806	2
WX-032	Kohler 231847	9	WX-895	Tecumseh 36356	14
WX-040	Kohler 235116	9	WX-909	Tecumseh 35403	13
WX-057	Kohler 277138	9	WX-917	Tecumseh 34700B	14
WX-065	Kohler 45 083 02	10	WX-941	Kohler 1208305	10
WX-069	Club Car 1013379	6	WX-957	Kohler 1208310	10
WX-073	B&S 390930	1	WX-958	Honda 17210-ZE0-505	7

# PART # INDEX



Walmi part #	Manufacturer	Sheet	Walmi part #	Manufacturer	Sheet
WX-073	B&S 390930	1	WX-622	Kawasaki 11029-7002	8
WX-453	B&S 392286	1	WPA-7010	Kawasaki 11029-7010	8
WX-081	B&S 392308	1	WPA-7016	Kawasaki 11029-7016	9
WX-131	B&S 392642	1	WX-49064-2006	Kawasaki 49064-2006	9
WX-487	B&S 393406	1	WX-100-024	Kohler 230840	9
WX-198	B&S 393725	1	WX-032	Kohler 231847	9
WX-164	B&S 394019	2	WX-040	Kohler 235116	9
WX-214	B&S 396424	2	WX-057	Kohler 277138	9
WPA-533	B&S 397795	2	WX-941	Kohler 1208305	10
WX-891	B&S 399806	2	WX-957	Kohler 1208310	10
WPA-541	B&S 399877	2	WPA-111	Kohler 1508301	10
WPA-549	B&S 399959	2	WX-758	Kohler 2408303	10
WPA-020	B&S 491384	3	WX-065	Kohler 4508302	10
WX-085	B&S 493909	3	WX-107	Kohler 4708301	10
WX-089	B&S 493910	3	WX-016	Kohler 4708303	11
WPA-102-024	B&S 494511	3	WX-8303	Kohler 1708303-S	11
WX-184	B&S 494586	3	WX-8307	Kohler 1708307-S	11
WPA-230	B&S 496077	3	WX-8304	Kohler 1808304-S	11
WPA-100-153	B&S 499486	4	WX-156	Onan 140-0495	11
WPA-796032	B&S 591583	4	WX-149	Onan 140-1228	11
WX-102-851	B&S 593260	4	WX-319	Onan 140-1911	12
WPA-796031	B&S 594201	4	WX-344	Shindaiwa 68206-80056	12
WX-093	B&S 690610	4	WX-343	Shindaiwa 68206-82400	12
WX-871	B&S 692446	4	WX-279	Stihl 315530	12
WX-102-119	B&S 692519	5	WPA-4134	Stihl 4134 141 0300B	12
WPA-226	B&S 710266	5	WX-709	Stihl 4201 141 0300	12
WPA-102-008	B&S 792105	5	WPA-228	Stihl 4223 141 0300	13
WPA-929	B&S 793569	5	WX-008	Tecumseh 30727	13
WPA-875	B&S 795115	5	WX-115	Tecumseh 33268	13
WPA-640	B&S 797007	5	WX-222	Tecumseh 35066	13
WPA-887	B&S 805113	6	WX-909	Tecumseh 35403	13
WX-069	Club Car 1013379	6	WPA-450	Tecumseh 36046	13
WPA-659	Club Car 1015426	6	WX-895	Tecumseh 36356	14
WPA-293	Echo 13030508360	6	WX-317	Tecumseh 36745	14
WPA-569	Echo A226000031	6	WX-812	Tecumseh 36905	14
WPA-26855	E-Z-Go 26855G01	7	WPA-1008-1	Tecumseh 37360	14
WPA-663	E-Z-Go 72144G01	7	WPA-412	Tecumseh 429778, 450247	14
WX-161	Homelite 46073	7	WX-917	Tecumseh 34700B	14
WX-139	Homelite 49512	7	WX-285	Tecumseh 34782B	15
WX-958	Honda 17210-ZE0-505	7	WX-457	Tecumseh 35850A	15
WX-784	Honda 17210-ZE1-505	7	WPA-100-162	Toro 136-7802, 127-9252	15
WPA-102-153	Honda 17211-ZG9-800	8	WPA-100-500	Wacker 0114792	15
WPA-382	Honda 17211-ZG9-M000	8	WPA-7193	Wacker 0157193	15
WPA-100-160	Kawasaki 11013-7002	8	WPA-3062	Wacker 5200003062	15
WPA-354	Kawasaki 11013-7017	8	WPA-1237	Weber 02100458 & 041 000 757	15

**WX-073**



Dimensional data & weight	Applications	Cross references
<ul style="list-style-type: none"> <li>• 1 7/8" ID x 4 1/4" OD x 3 3/4" HT - Weight 0.11 lb</li> </ul>	<ul style="list-style-type: none"> <li>• For 7 thru 18 HP horizontal engines</li> <li>• Fits models 170400,171400, 190400, 195400, 220400, 222400, 233400,243400, 252400, 254400, 290400,302400, 303400</li> </ul>	B&S 390930 Rotary 1374 Stens 100-073 John Deere LG393957 Ariens 02451900

**WX-453**



Dimensional data & weight	Applications	Cross references
<ul style="list-style-type: none"> <li>• 3 7/16" ID x 5" OD x 2 3/8" HT - Weight 0.06 lb</li> </ul>	<ul style="list-style-type: none"> <li>• For 10, 11 and 12 HP vertical engines</li> <li>• Fits models 251400 thru 255400</li> </ul>	B&S 39286 Rotary 6514 Stens 102-906  Oregon 30-022

**WX-081**



Dimensional data & weight	Applications	Cross references
<ul style="list-style-type: none"> <li>• 1 1/4" ID x 2 3/4" OD x 2 7/8" HT - Weight 0.04 lb</li> </ul>	<ul style="list-style-type: none"> <li>• For 2 thru 5 HP engines</li> <li>• Fits models 60000, 80000 thru 93000, 110900, 112200, 130000 thru 132000</li> </ul>	B&S 392308 Rotary 1396 Stens 100-081 John Deere LG392308S, M83339 Oregon 30-132

**WX-131**



Dimensional data & weight	Applications	Cross references
<ul style="list-style-type: none"> <li>• 5 5/8" ID x 7" OD x 2 1/4" HT - Weight 0.09 lb</li> </ul>	<ul style="list-style-type: none"> <li>• For L-Head Twin horizontal and all V-Twin Vanguard engines</li> <li>• Fits models 290000, 294000,303400, 303700, 303900, 400400 thru 422400</li> </ul>	B&S 392642 Rotary 2777 Stens 100-131 John Deere LG394018JD Oregon 30-101

**WX-487**



Dimensional data & weight	Applications	Cross references
<ul style="list-style-type: none"> <li>• 3 3/16" W x 5 1/8" L x 2 1/8" HT - Weight 0.03 lb</li> </ul>	<ul style="list-style-type: none"> <li>• For 7 and 8 HP vertical engines</li> <li>• Fits models 170700, 190700 thru 193700</li> </ul>	B&S 393406 Rotary 2840 Stens NA John Deere AM-37540 Oregon 30-106

**WX-198**



Dimensional data & weight	Applications	Cross references
<ul style="list-style-type: none"> <li>• 3 3/16" W x 5 1/8" L x 2 1/2" HT - Weight 0.03 lb</li> </ul>	<ul style="list-style-type: none"> <li>• For 11 HP vertical engines</li> <li>• Fits models 252700, 253700 and 256700</li> </ul>	B&S 393725 Rotary 2778 Stens 100-198 John Deere AM-37816 Oregon 30-105

**WX-164**



Dimensional data & weight
<ul style="list-style-type: none"> <li>• 3 3/16" W x 9 11/16" L x 2 1/2" HT - Weight 0.11 lb</li> </ul>

Applications
<ul style="list-style-type: none"> <li>• For 16 and 18 HP vertical twin (L-Head) cylinder engines</li> <li>• Fits models 400700 thru 422700</li> </ul>

Cross references
B&S 394019 Rotary 2806 Stens 100-164 John Deere AM-38990 Oregon 30-104

**WX-214**



Dimensional data & weight
<ul style="list-style-type: none"> <li>• 1 1/4" ID x 2 3/4" OD x 2 7/8" HT - Weight 0.05 lb</li> </ul>

Applications
<ul style="list-style-type: none"> <li>• For 2 thru 5 HP engines</li> <li>• Fits models 60000, 80000 thru 93000, 110900, 112200, 130000 thru 132000, 12G800, 12V800, 12W800</li> </ul>

Cross references
B&S 396424 Rotary 2788 Stens 100-214 John Deere PT7953 Oregon 30-094

**WPA-533**



Dimensional data & weight
<ul style="list-style-type: none"> <li>• 4 1/2" W x 6 3/8" L x 3/4" HT - Weight 0.03 lb</li> </ul>

Applications
<ul style="list-style-type: none"> <li>• For 3.5 and 4 HP Max, and 4 &amp; 5 HP (9 CID) 2-cycle engines</li> <li>• Fits models 90700, 91700, 95700, 96700, 110700, 111700, 112700, 114700, 130700 and 131700</li> </ul>

Cross references
B&S 397795 Rotary 2789 Stens 102-533 John Deere PT11025, PT15853 Oregon 30-700

**WX-891**



Dimensional data & weight
<ul style="list-style-type: none"> <li>• 2 5/8" W x 8 1/2" L x 2 5/8" HT - Weight 0.09 lb</li> </ul>

Applications
<ul style="list-style-type: none"> <li>• For 10 thru 12 HP vertical engines</li> <li>• Fits models 253700, 256700, 280700 and 281700</li> </ul>

Cross references
B&S 399806 Rotary 5941 Stens 100-891 Laser 93096 Oregon 30-107

**WPA-541**

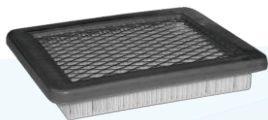


Dimensional data & weight
<ul style="list-style-type: none"> <li>• 4 5/8" W x 4 5/8" L x 3/4" HT - Weight 0.03 lb</li> </ul>

Applications
<ul style="list-style-type: none"> <li>• For 3.5 HP Quantum engine with side starter</li> <li>• Fits models 100700</li> </ul>

Cross references
B&S 399877 Rotary 2841 Stens 102-541 Laser 93074, 93075 Oregon 30-720

**WPA-549**

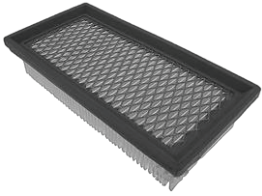


Dimensional data & weight
<ul style="list-style-type: none"> <li>• 4 1/2" W x 5 1/4" L x 3/4" HT - Weight 0.04 lb</li> </ul>

Applications
<ul style="list-style-type: none"> <li>• For 3-5 HP horizontal, 3.5-6 HP (12 CID) Quantum and 6 HP (13 CID) vertical engines</li> <li>• Fits models 80200 thru 82200, 100700, 112200, 121000 thru 126000, 132200 and 135200</li> </ul>

Cross references
B&S 399959 Rotary 2838 Stens 102-549 John Deere AM116236, LG491588, LG491588JD, PT15853

**WPA-020**



Dimensional data & weight	Applications	Cross references
<ul style="list-style-type: none"> <li>• 3 1/2" W x 7" L x 1 1/2" HT - Weight 0.04 lb</li> </ul>	<ul style="list-style-type: none"> <li>• For 9 HP (16 CID) Vanguard engines</li> <li>• Fits model 161400</li> </ul>	B&S 491384 Rotary NA Stens 102-020 Laser 93030 Oregon 30-731

**WX-085**



Dimensional data & weight	Applications	Cross references
<ul style="list-style-type: none"> <li>• 7 1/4" L x 3" HT x 2 7/8" W wide end (2 3/16" narrow end) - Weight 0.1 lb</li> </ul>	<ul style="list-style-type: none"> <li>• For 12.5 thru 15 HP vertical engines</li> <li>• Fits models 282700, 283700, 286700</li> </ul>	B&S 493909 Rotary 7094 Stens 100-085 John Deere LG496894JD, LG496894S Oregon 30-049

**WX-089**



Dimensional data & weight	Applications	Cross references
<ul style="list-style-type: none"> <li>• 7 1/4" L x 2 3/8" HT x 2 7/8" W wide end (2 3/16" W narrow end) - Weight 0.09 lb</li> </ul>	<ul style="list-style-type: none"> <li>• For 8.5, 10.5 and 11.5 HP vertical engines</li> <li>• Fits models 196700, 257700, 259700, 28A700, 28B700, 28C700 and 28D700</li> </ul>	B&S 493910 Rotary 7214 Stens 100-089 B&S 4166, 5075 H & K, 691667 Oregon 30-048

**WPA-102-024**



Dimensional data & weight	Applications	Cross references
<ul style="list-style-type: none"> <li>• 3 1/2" W x 7" L x 1 1/8" HT - Weight 0.03 lb</li> </ul>	<ul style="list-style-type: none"> <li>• For 3.5 &amp; 5 HP IC and 5.5 hp Vanguard engines</li> <li>• Fits models 93400, 115400 and 133400</li> </ul>	B&S 494511 Rotary 7877 Stens 102-024 Kohler 230840 Oregon 30-735

**WX-184**



Dimensional data & weight	Applications	Cross references
<ul style="list-style-type: none"> <li>• 2 1/2" W x 4" L x 2 5/32" HT - Weight 0.05 lb</li> </ul>	<ul style="list-style-type: none"> <li>• For 5 HP Quantum engines</li> <li>• Fits models 12U800 and 12U899</li> </ul>	B&S 494586 Rotary 8815 Stens 100-184 Laser 93055 Oregon 30-735

**WPA-230**



Dimensional data & weight	Applications	Cross references
<ul style="list-style-type: none"> <li>• 3 1/2" W x 7" L x 1 1/2" HT - Weight 0.03 lb</li> </ul>	<ul style="list-style-type: none"> <li>• For 8 HP</li> <li>• Fits models 176400, 19B400, 19E400, 226400, 256400, 19F400, 19G700, 19Z400 and 196400</li> </ul>	B&S 496077 Rotary 7880 Stens 102-230 John Deere AM34093 Generac 0691643, 1691643, 691643

**WPA-100-153**



Dimensional data & weight	Applications	Cross references
<ul style="list-style-type: none"> <li>• 4 3/8" W x 7 3/8" L x 1 3/8" HT - Weight 0.05 lb</li> </ul>	<ul style="list-style-type: none"> <li>• For 18 thru 22 HP Intek V-twin engines</li> <li>• Fits models 405700-407700</li> </ul>	B&S 499486 Rotary 9273 Stens 100-153 Ariens 21531500 Craftsman 33926

**WPA-796032**



Dimensional data & weight	Applications	Cross references
<ul style="list-style-type: none"> <li>• 1 15/32" ID x 3" OD x 4" HT - Weight 0.05 lb</li> </ul>	<ul style="list-style-type: none"> <li>• For 7-18 HP horizontal engines, Suits 21 Series Engines</li> <li>• Fits models 215802, 215805 and 215807</li> </ul>	B&S 591583 Rotary 14158 Stens 102-016 Oregon 30-852 Napa 7-08243

**WX-102-851**



Dimensional data & weight	Applications	Cross references
<ul style="list-style-type: none"> <li>• 2 5/8" W x 4 3/8" L x 1 5/16" HT - Weight 0.05 lb</li> </ul>	<ul style="list-style-type: none"> <li>• For 550EX 625EX 675EX 725EXI series engines</li> <li>• Fits models 09P702, 103M02 &amp; 104M02</li> </ul>	B&S 593260 Rotary 14364 Stens 102-851 Oregon 30-168 Laser 93377

**WPA-796031**



Dimensional data & weight	Applications	Cross references
<ul style="list-style-type: none"> <li>• 1 15/32" ID x 3" OD x 5" HT - Weight 0.06 lb</li> </ul>	<ul style="list-style-type: none"> <li>• For engines 13.5-19.5 HP/CV Intek</li> <li>• Fits models 31A507, 31A607, 31A677, 31A707, 31A807, 31C707, 31E577, 31E607, 31E677, 31E777 and 31G777</li> </ul>	B&S 594201 Rotary 13644 Stens 102-012 John Deere MIU13038, MIU13963 B&S 591334

**WX-093**



Dimensional data & weight	Applications	Cross references
<ul style="list-style-type: none"> <li>• 2 1/2" W x 4" L x 3" HT - Weight 0.05 lb</li> </ul>	<ul style="list-style-type: none"> <li>• For Intek series 121600, OHV engines. JD selected JA60, JA65, JS60, JS61 &amp; JS63</li> <li>• Fits models 123600,123602,123607, 121600, 122600 OHV</li> </ul>	B&S 690610 Rotary 9168 Stens 100-093 John Deere M143278, M147431 Craftsman 33064

**WX-871**



Dimensional data & weight	Applications	Cross references
<ul style="list-style-type: none"> <li>• 2 1/2" W x 4" L x 3" HT - Weight 0.04 lb</li> </ul>	<ul style="list-style-type: none"> <li>• For 6 - 6.5 HP Intek vertical shaft engines with high mount air filtration system.</li> <li>• Fits models 123602,123607 and 123672</li> </ul>	B&S 692446 Rotary 9591 Stens 100-871 Toro 98-9212



**WX-102-119**



Dimensional data & weight	Applications	Cross references
<ul style="list-style-type: none"> <li>• 5 1/2" ID x 7 3/4" OD x 2 1/4" HT - Weight 0.07 lb</li> </ul>	<ul style="list-style-type: none"> <li>• For 38, 54 and 61 CID V-Twin Engines</li> <li>• Fits models V-twin Vanguard engines 358700-389400</li> </ul>	B&S 692519 Rotary 11795 Stens 102-119 Toro 102119 Oregon 30-087

**WPA-226**



Dimensional data & weight	Applications	Cross references
<ul style="list-style-type: none"> <li>• 3 7/8" W x 8 5/16" L x 1 1/8" HT - Weight 0.04 lb</li> </ul>	<ul style="list-style-type: none"> <li>• For 9-15 HP Single Cylinder Vanguard. Generac For 9-13 HP single cylinder Vanguard</li> <li>• Fits 185400 and 235400-245400</li> </ul>	B&S 710266 Rotary 8814 Stens 102-226 Generac 0710266, 710266 Oregon 30-762

**WPA-102-008**



Dimensional data & weight	Applications	Cross references
<ul style="list-style-type: none"> <li>• 3 3/8" W x 5 1/4" L x 4 3/4" HT - Weight 0.06 lb</li> </ul>	<ul style="list-style-type: none"> <li>• For select Intek V-Twin OHV engines</li> <li>• Fits models B&amp;S 407777, 40G777, 40H777, 445667, 445877, 44H777, 44K777 and 44L777 John Deere D160, D170, LA155, LA165,</li> </ul>	B&S 792105 Rotary 12282 Stens 102-008 John Deere MIU11515 Oregon 30-145

**WPA-929**



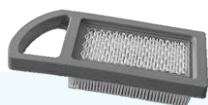
Dimensional data & weight	Applications	Cross references
<ul style="list-style-type: none"> <li>• 1 1/2" W x 3" L x 5 7/8" HT - Weight 0.06 lb</li> </ul>	<ul style="list-style-type: none"> <li>• For 20-21 HP engines</li> <li>• Fits models B&amp;S 31L777, 31M977, 31Q777, 331707, 331777, 331807, 331877, 33M677 and 33M777 and John Deere LA125 and D120</li> </ul>	B&S 793569 Rotary 12673 Stens 100-004 John Deere GY21055, MIU11511 Oregon 30-167

**WPA-875**



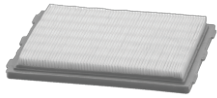
Dimensional data & weight	Applications	Cross references
<ul style="list-style-type: none"> <li>• 3 3/16" W x 9" L x 1 1/2" HT - Weight 0.05 lb</li> </ul>	<ul style="list-style-type: none"> <li>• For Intek AVS engines</li> <li>• Fits B&amp;S 286H77-0121, 284H07, 284H77, 285H77, 31E707, 31E777, 31F777, 31G777, 31H777 and 31P677; for Intek AVS engines, JOHN DEERE Z225</li> </ul>	B&S 795115 Rotary 10184 Stens 102-875 John Deere M149171 Oregon 30-074

**WPA-640**



Dimensional data & weight	Applications	Cross references
<ul style="list-style-type: none"> <li>• 3 3/16" W x 7 5/16" L x 1 1/2" HT - Weight 0.05 lb</li> </ul>	<ul style="list-style-type: none"> <li>• For 8-13.5 HP power built OHV, I/C and AVS engines</li> <li>• Fits models 21A900 and 21B900 series</li> </ul>	B&S 797007 Rotary 10263 Stens 100-640 Ariens 21544020 Oregon 30-073

**WPA-887**



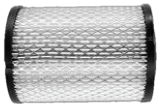
Dimensional data & weight
<ul style="list-style-type: none"> <li>• 6 5/16" W x 7 1/8" L x 3/4" HT - Weight 0.06 lb</li> </ul>

Applications
<ul style="list-style-type: none"> <li>• For 12.5, 14 &amp; 16 HP Horizontal &amp; Vertical V-TWIN OHV Vanguard Engines</li> <li>• For 12.5 &amp; 16 HP horizontal &amp; vertical V-Twin Vanguard</li> </ul>

Cross references
B&S 805113 Rotary 6601 Stens 100-887 Laser 93048 Oregon 30-736

**CLUB CAR**

**WX-069**

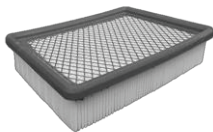


Dimensional data & weight
<ul style="list-style-type: none"> <li>• 2 1/16" ID x 4 1/8" OD x 6 1/4" HT - Weight 0.11 lb</li> </ul>

Applications
<ul style="list-style-type: none"> <li>• For 8 &amp; 10.5 hp mower engines and 17 &amp; 20 hp tractor engines</li> <li>• Fits E-Z-GO, 2-cycle gas, JOHN DEERE mower 66 - 68, lawn tractor 317 &amp; 400</li> </ul>

Cross references
Club Car 1013379 Rotary 8332 Stens 100-069 John Deere AM-100137 EZ-GO 14416GL

**WPA-659**



Dimensional data & weight
<ul style="list-style-type: none"> <li>• 7 19/32" L x 6 1/32" W X 1 15/16" HT - Weight 0.07 lb</li> </ul>

Applications
<ul style="list-style-type: none"> <li>• For DS, gas, 1992 and newer</li> <li>• Fits models Club Car, engine OHV</li> </ul>

Cross references
Club Car 1015426 Rotary 8331 Stens 100-659 Baldwin PA2160 Donalson P606219

**CUB CADET**

**WPA-93705066**



Dimensional data & weight
<ul style="list-style-type: none"> <li>• 1 1/2" ID x 3 1/2" OD x 4 5/16" HT - Weight 0 lb</li> </ul>

Applications
<ul style="list-style-type: none"> <li>• For 547cc PowerMore Engines.</li> <li>• Fits Engine Models: 4X90HU, 8X90KU, 8X90ZU, 9X90HU (Used on Riding Mowers)</li> </ul>

Cross references
Cub Cadet 937-05066 Rotary 15847 Stens NA Replaces 737-05066

**ECHO**

**WPA-293**

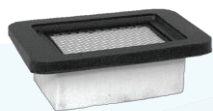


Dimensional data & weight
<ul style="list-style-type: none"> <li>• 2 7/8" W x 10 3/8" L x 1 11/32" HT - Weight 0.04 lb</li> </ul>

Applications
<ul style="list-style-type: none"> <li>• For Echo PB60H, PB460, PB600, PB601, PB750 and PB755 series blowers; Shindaiwa EB633</li> <li>• For PB460, PB460LN, PB461, PB4600, PB601, PB602, PB6000, PB750T, PB755H and PB755T blowers</li> </ul>

Cross references
Echo 13030508360 Rotary 8735 Stens 100-293 Napa 7-08342 Oregon 55-201

**WPA-569**

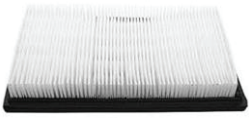


Dimensional data & weight
<ul style="list-style-type: none"> <li>• 2 11/16" W x 4 3/16" L x 1 3/16" HT - Weight 0.02 lb</li> </ul>

Applications
<ul style="list-style-type: none"> <li>• For Echo 400, 500, 600 and 700 series backpack blowers</li> <li>• Fits blowers PB403, PB413, PB603, PB611 and PB650</li> </ul>

Cross references
Echo A226000031 Rotary 10269 Stens 102-569 Sunbelt B15B1026 Oregon 30-439-1

**WPA-26855**

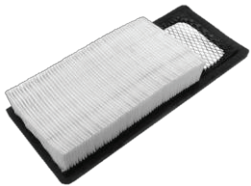


Dimensional data & weight
<ul style="list-style-type: none"> <li>• 5 1/16" W x 8 17/32" L x 1 3/8" HT - Weight 0.07 lb</li> </ul>

Applications
<ul style="list-style-type: none"> <li>• For Gas Marathon models: PC4X, 4GX, 4GXl, XI300, XI500 and 804 models</li> <li>• Fits GK180 Tuff truck</li> </ul>

Cross references
E-Z-Go 26855G01 Rotary NA Stens 102-705 Napa 7-083201

**WPA-663**



Dimensional data & weight
<ul style="list-style-type: none"> <li>• 5 1/8" W x 11 1/2" L x 1 13/16" HT - Weight 0.08 lb</li> </ul>

Applications
<ul style="list-style-type: none"> <li>• For TXT (1994-2005) 295cc &amp; 350cc engines</li> <li>• Fits E-Z-GO vertical twin cylinder 4-cycle engine</li> </ul>

Cross references
E-Z-Go 72144G01 Rotary 9571 Stens 100-663 Lucas Oil 10080

**HOMELITE**

**WX-161**



Dimensional data & weight
<ul style="list-style-type: none"> <li>• 1 13/16" ID x 4 1/4" OD x 2 9/16" HT - Weight 0.07 lb</li> </ul>

Applications
<ul style="list-style-type: none"> <li>• For DM50 Cut-Off Saw</li> <li>• Fits Homelite concrete saw 46073</li> </ul>

Cross references
Homelite 46073 Rotary NA Stens NA Luber-finer LAF8203

**WX-139**



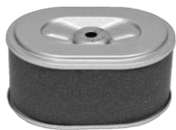
Dimensional data & weight
<ul style="list-style-type: none"> <li>• 1 13/16" ID x 4 1/4" OD x 3 1/2" HT - Weight 0.08 lb</li> </ul>

Applications
<ul style="list-style-type: none"> <li>• For MP88 Multi Purpose Saw</li> <li>• Fits models DM-54 Multipurpose saws</li> </ul>

Cross references
Homelite 49512 Rotary NA Stens NA

**HONDA**

**WX-958**



Dimensional data & weight
<ul style="list-style-type: none"> <li>• 2 7/8" W x 4" L x 2 1/8" HT - Weight 0.04 lb</li> </ul>

Applications
<ul style="list-style-type: none"> <li>• For 3.5 and 4 HP engines</li> <li>• Fits models GX110 and GX120K1</li> </ul>

Cross references
Honda 17210-ZE0-505 Rotary 7044 Stens 100-958 K&N E-3019 Oregon 30-318

**WX-784**



Dimensional data & weight
<ul style="list-style-type: none"> <li>• 2 7/8" W x 4" L x 2 3/4" HT - Weight 0.04 lb</li> </ul>

Applications
<ul style="list-style-type: none"> <li>• For 3.5, 5 and 5.5 HP engines</li> <li>• Fits models GX110, GX120, GX140 and GX160K1</li> </ul>

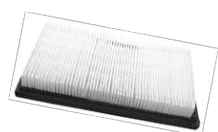
Cross references
Honda 17210-ZE1-505 Rotary 6690 Stens 100-784 Laser 93011 Oregon 30-404

### WPA-102-153



Dimensional data & weight	Applications	Cross references
<ul style="list-style-type: none"> <li>• 2 3/8" W x 5 3/8" L x 1" HT - Weight 0.02 lb</li> </ul>	<ul style="list-style-type: none"> <li>• For 5 HP engines</li> <li>• Fits models GVX 140</li> </ul>	Honda 17211-ZG9-800 Rotary 8903 Stens 102-149 Prime Line 7-08329 Oregon 30-027

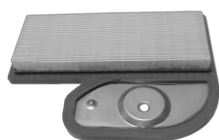
### WPA-382



Dimensional data & weight	Applications	Cross references
<ul style="list-style-type: none"> <li>• 3 1/2" W x 5 23/32" L x 1" HT - Weight 0.03 lb</li> </ul>	<ul style="list-style-type: none"> <li>• For HRM 215, HRB 215, HR215K1 engines</li> <li>• Fits models GXV140, 2000 and older</li> </ul>	Honda 17211-ZG9-M000 Rotary 7980 Stens 100-378 Kohler 1408301, 1408304 Oregon 30-165

## KAWASAKI

### WPA-100-160



Dimensional data & weight	Applications	Cross references
<ul style="list-style-type: none"> <li>• 8 21/64" L x 1 7/64" HT x 3 13/16" W (6 7/16" with tab) - Weight 0.06 lb</li> </ul>	<ul style="list-style-type: none"> <li>• For 17 HP engines</li> <li>• Fits models FH500V, EXMARK and before.</li> </ul>	Kawasaki 11013-7002 Rotary 9506 Stens 100-160 John Deere M137556 Cub Cadet 490-200-0004

### WPA-354



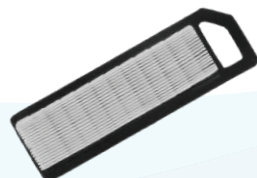
Dimensional data & weight	Applications	Cross references
<ul style="list-style-type: none"> <li>• 4 1/4" W x 7 1/4" L x 1" HT - Weight 0.04 lb</li> </ul>	<ul style="list-style-type: none"> <li>• For 13 &amp; 15 HP engines</li> <li>• Fits models FH381V, FH340V and FH491V</li> </ul>	Kawasaki 11013-7017 Rotary 10313 Stens 102-354 John Deere MIU10998 Oregon 30-057

### WX-622



Dimensional data & weight	Applications	Cross references
<ul style="list-style-type: none"> <li>• 3 17/32" W x 7 3/8" L x 3 1/16" HT - Weight 0.09 lb</li> </ul>	<ul style="list-style-type: none"> <li>• For 22-23 HP engines</li> <li>• Fits models liquid cooled</li> </ul>	Kawasaki 11029-7002 Rotary 9584 Stens 100-622 Oregon 30-054 Cub Cadet GT1500, LT1000, SLT1500

### WPA-7010



Dimensional data & weight	Applications	Cross references
<ul style="list-style-type: none"> <li>• 2 5/8" W x 8 5/8" L x 1 3/32" HT - Weight 0.03 lb</li> </ul>	<ul style="list-style-type: none"> <li>• For SX series, Harmon 215, and Model HRM215 engines</li> <li>• Fits models FJ180V</li> </ul>	Kawasaki 11029-7010 Rotary 10398 Stens 102-667 John Deere AM134111 Oregon 30-706

### WPA-7016



Dimensional data & weight	Applications	Cross references
<ul style="list-style-type: none"> <li>• 2 11/16" W x 8 11/16" L x 1 11/32" HT - Weight 0.03 lb</li> </ul>	<ul style="list-style-type: none"> <li>• For 5.2 HP engines</li> <li>• Fits models FJ180V-AS04, 3144-AA-1312A, 49064-2059</li> </ul>	Kawasaki 11029-7016 Rotary 7714 Stens 102-358 John Deere M71952 Oregon 30-313

### WX-49064-2006



Dimensional data & weight	Applications	Cross references
<ul style="list-style-type: none"> <li>• 3 1/4" W x 4 1/4" L x 2 3/4" HT - Weight 0.09 lb</li> </ul>	<ul style="list-style-type: none"> <li>• Fits models FZ340D G500, FZ340D C506, FZ340D F502, FZ340G C500</li> </ul>	Kawasaki 49064-2006 Rotary NA Stens NA

## KOHLER

### WX-100-024



Dimensional data & weight	Applications	Cross references
<ul style="list-style-type: none"> <li>• 3" ID x 4 3/8" OD x 1 1/2" HT - Weight 0.06 lb</li> </ul>	<ul style="list-style-type: none"> <li>• For 4 thru 7 HP engines</li> <li>• Fits Kohler models K91 thru K161</li> </ul>	Kohler 230840 Rotary 1384 Stens 100-024 John Deere AM-31034 Tecumseh 30804

### WX-032



Dimensional data & weight	Applications	Cross references
<ul style="list-style-type: none"> <li>• 3" ID x 4 3/8" OD x 2 11/32" HT - Weight 0.07 lb</li> </ul>	<ul style="list-style-type: none"> <li>• For 8 HP engines</li> <li>• Fits model K181</li> </ul>	Kohler 231847 Rotary 1385 Stens 100-032 John Deere AM-30800 Cub Cadet 548436-R1

### WX-040



Dimensional data & weight	Applications	Cross references
<ul style="list-style-type: none"> <li>• 4 21/32" ID x 6" OD x 1 7/8" HT - Weight 0.07 lb</li> </ul>	<ul style="list-style-type: none"> <li>• For 8 HP thru 23 HP Kohler engines</li> <li>• Fits models M8, K181LN and K241thru K582</li> </ul>	Kohler 235116 Rotary 1386 Stens 100-040 John Deere AM-31400 Cub Cadet 385168-R2

### WX-057



Dimensional data & weight	Applications	Cross references
<ul style="list-style-type: none"> <li>• 4 21/32" ID x 6" OD x 4" HT - Weight 0.12 lb</li> </ul>	<ul style="list-style-type: none"> <li>• For 18, 20 &amp; 23HP engines</li> <li>• Fits models K482, K532 and K582 series</li> </ul>	Kohler 277138 Rotary 1387 Stens NA

**WX-941**



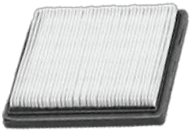
Dimensional data & weight	Applications	Cross references
<ul style="list-style-type: none"> <li>• 3 3/4" W x 4 5/8" L x 2 13/16" HT - Weight 0.07 lb</li> </ul>	<ul style="list-style-type: none"> <li>• For 12.5HP Command Series engine</li> <li>• Fits Command CV 11-15 engines</li> </ul>	Kohler 12 083 05 Rotary 6605 Stens 100-941 Oregon 30-085 John Deere AM-121608, GY20574, M92359

**WX-957**



Dimensional data & weight	Applications	Cross references
<ul style="list-style-type: none"> <li>• 3 3/4" W x 4 5/8" L x 3 3/8" HT - Weight 0.07 lb</li> </ul>	<ul style="list-style-type: none"> <li>• For 14HP Command series engines</li> <li>• Fits models CV 11-15 large capacity engines</li> </ul>	Kohler 12 083 10 Rotary 8235 Stens 100-957 John Deere GY20661, M145944 Bobcat 38362

**WPA-111**



Dimensional data & weight	Applications	Cross references
<ul style="list-style-type: none"> <li>• 4" W x 4" L x 3/4" HT - Weight 0.02 lb</li> </ul>	<ul style="list-style-type: none"> <li>• For 5HP Command engines</li> <li>• Fits Command CH5 series engines</li> </ul>	Kohler 15 083 01 Rotary NA Stens NA

**WX-758**



Dimensional data & weight	Applications	Cross references
<ul style="list-style-type: none"> <li>• 5 9/16" ID x 7" OD x 2 15/16" HT - Weight 0.11 lb</li> </ul>	<ul style="list-style-type: none"> <li>• For Command 18 thru 25 HP engines</li> <li>• Fits models CH18, CH25 and CV25, Kubota ZG20 and ZG23</li> </ul>	Kohler 24 083 03 Rotary 8329 Stens 100-758 John Deere GY20576

**WX-065**



Dimensional data & weight	Applications	Cross references
<ul style="list-style-type: none"> <li>• 4 21/32" ID x 6" OD x 3" HT - Weight 0.1 lb</li> </ul>	<ul style="list-style-type: none"> <li>• For 10 thru 18 HP Magnum Engines</li> <li>• Fits models K341, MV16 thru 20, M10 thru M16</li> </ul>	Kohler 45 083 02 Rotary 1388 Stens 100-065 John Deere AM-37201 Cub Cadet 1759-3359

**WX-107**



Dimensional data & weight	Applications	Cross references
<ul style="list-style-type: none"> <li>• 5 9/16" ID x 7" OD x 1 3/4" HT - Weight 0.1 lb</li> </ul>	<ul style="list-style-type: none"> <li>• For 17 thru 20 HP Magnum Series Horizontal Shaft Engines. Also used on Grazer, Snapper ZTR.</li> <li>• Fits models K181, K241-341, CH11-14,</li> </ul>	Kohler 47 083 01 Rotary 2774 Stens 100-107 John Deere M83646 Cub Cadet KH-47-883-01-S1, 117210-C1, 759-3547

**WX-016**



Dimensional data & weight
<ul style="list-style-type: none"> <li>• 5 9/16" ID x 7" OD x 2 7/16" HT - Weight 0.12 lb</li> </ul>

Applications
<ul style="list-style-type: none"> <li>• For 17 thru 22 HP engines</li> <li>• Fits models K241 thru K361, CH 18, 20, 22 and CV16. John Deere F620, F680, F687 and M653 ZTrak mowers, Toro Workman 3100, 3120, 66" Rake-O-Vac and Turf Sweeper 4800</li> </ul>

Cross references
Kohler 47 083 03 Rotary 1389 Stens 100-016 John Deere AM-47494 Oregon 30-095

**WX-8303**



Dimensional data & weight
<ul style="list-style-type: none"> <li>• 1 5/8" ID x 3" OD x 4 15/32" HT - Weight 0.08 lb</li> </ul>

Applications
<ul style="list-style-type: none"> <li>• For up to 87 compatible Kohler engines (use 17 083 21-S)</li> <li>• For CH 395-0011, CH395-0014, CH 440-0011, CH 440-0014 engines.</li> </ul>

Cross references
Kohler 17 083 03-S Rotary 15368 Stens 102-980

**WX-8307**



Dimensional data & weight
<ul style="list-style-type: none"> <li>• 1 1/4" ID x 2 1/2" OD x 3 7/8" HT - Weight 0.05 lb</li> </ul>

Applications
<ul style="list-style-type: none"> <li>• For up to 54 compatible Kohler engines (use 17 083 23-S)</li> <li>• For CH 260 and CH 270 engines.</li> </ul>

Cross references
Kohler 17 083 07-S Rotary 1708323S Stens 102-918 Oregon 30-188

**WX-8304**



Dimensional data & weight
<ul style="list-style-type: none"> <li>• 2 7/8" W x 4" L x 2 3/8" HT - Weight 0.04 lb</li> </ul>

Applications
<ul style="list-style-type: none"> <li>• For 6.5 HP engines</li> <li>• For SH 265 engines. 17 compatible models</li> </ul>

Cross references
Kohler 18 083 04-S Rotary 1808304S Stens NA

**WX-156**



Dimensional data & weight
<ul style="list-style-type: none"> <li>• 3" ID x 4 3/8" OD x 3 1/2" HT - Weight 0.06 lb</li> </ul>

Applications
<ul style="list-style-type: none"> <li>• Replaces Onan 122-0495, 122-0608, 122-0679, 122-0680 140-0126</li> <li>• Fits models BFA, BGA, CCKA, CCKB, NH, NHB and NHC</li> </ul>

Cross references
Onan 140-0495 Rotary 2791 Stens NA WIX 42371 - M&H C11130 FRAM CA73 - Luber Finer LAF73

**WX-149**



Dimensional data & weight
<ul style="list-style-type: none"> <li>• 6 5/8" ID x 8" OD x 2 1/8" HT - Weight 0.11 lb</li> </ul>

Applications
<ul style="list-style-type: none"> <li>• Replaces Onan 140-2522, 140-2628, 140-2628-01, P218G - Toro NN10774</li> <li>• Fits models NHC, T260, NHA, NHB, B43, P216, P218, P220 and P224. For 16 thru 20 HP engines</li> </ul>

Cross references
Onan 140-1228 Rotary 2790 Stens 100-149 Oregon 30-430 John Deere AM106953, HE1401228, HE1402522, HE1402628

**WX-319**



Dimensional data & weight	Applications	Cross references
<ul style="list-style-type: none"> <li>• 6 1/2" ID x 8" OD x 3 7/8" HT - Weight 0.13 lb</li> </ul>	<ul style="list-style-type: none"> <li>• For 24 HP engines Replaces 140-2523, 140-2628-02</li> <li>• Fits models P216, P218, P220, P224 and P260</li> </ul>	<ul style="list-style-type: none"> <li>Onan 140-1911</li> <li>Rotary 6583</li> <li>Stens 102-319</li> <li>John Deere AM101812</li> <li>Craftsman 2363 - Murray 2363, 42363</li> </ul>

**SHINDAIWA**

**WX-344**



Dimensional data & weight	Applications	Cross references
<ul style="list-style-type: none"> <li>• 2 11/32" ID x 3 13/16" OD x 1 3/16" HT - Weight 0.05 lb</li> </ul>	<ul style="list-style-type: none"> <li>• Fits models</li> </ul>	<ul style="list-style-type: none"> <li>Shindaiwa 68206-80056</li> <li>Rotary NA</li> <li>Stens NA</li> </ul>

**WX-343**



Dimensional data & weight	Applications	Cross references
<ul style="list-style-type: none"> <li>• 2 11/32" ID x 3 13/16" OD x 1 3/4" HT - Weight 0.07 lb</li> </ul>	<ul style="list-style-type: none"> <li>• For Shindaiwa A226000510. Replaces 68206-82400, 72935-82310 &amp; 72935-81759</li> <li>• Fits models EB630, EB630RT and B530 backpack blowers</li> </ul>	<ul style="list-style-type: none"> <li>Shindaiwa 68206-82400</li> <li>Rotary 12458</li> <li>Stens 100-343</li> </ul>

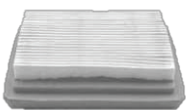
**STIHL**

**WX-279**



Dimensional data & weight	Applications	Cross references
<ul style="list-style-type: none"> <li>• 4 3/16" ID x 5 15/32" OD x 2 9/16" HT - Weight 0.13 lb</li> </ul>	<ul style="list-style-type: none"> <li>• For</li> <li>• Fits model K185</li> </ul>	<ul style="list-style-type: none"> <li>Stihl 315530</li> <li>Rotary NA</li> <li>Stens NA</li> </ul>

**WPA-4134**



Dimensional data & weight	Applications	Cross references
<ul style="list-style-type: none"> <li>• 2 13/16" W x 3 15/32" L x 1" HT - Weight 0.01 lb</li> </ul>	<ul style="list-style-type: none"> <li>• For Trimmer Models FS120, 200, 250, 350, 450 and BT120C Earth Auger.</li> <li>• Fits HT250</li> </ul>	<ul style="list-style-type: none"> <li>Stihl 4134 141 0300B</li> <li>Rotary 11659</li> <li>Stens 102-404</li> </ul>

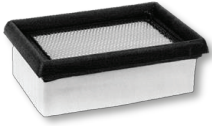
**WX-709**



Dimensional data & weight	Applications	Cross references
<ul style="list-style-type: none"> <li>• 2 3/8" ID x 3 7/8" OD x 2 13/16" HT - Weight 0.09 lb</li> </ul>	<ul style="list-style-type: none"> <li>• For TS760 Chain Saw Double screw cover</li> <li>• Fits Cut-Quick models TS350, TS360, TS510 and TS760</li> </ul>	<ul style="list-style-type: none"> <li>Stihl 4201 141 0300</li> <li>Rotary 3116</li> <li>Stens 605-709</li> <li>Oregon 55-240</li> <li>Laser 43031 PLP 122-353</li> </ul>



**WPA-228**



Dimensional data & weight	Applications	Cross references
<ul style="list-style-type: none"> <li>• 3 11/32" W x 5 11/32" L x 1 27/32" HT - Weight 0.03 lb</li> </ul>	<ul style="list-style-type: none"> <li>• Fits TS400 series</li> </ul>	Stihl 4223 141 0300 Rotary 9608 Stens 605-228 Oregon 55-249 Laser 43112

**TECUMSEH**

**WX-008**



Dimensional data & weight	Applications	Cross references
<ul style="list-style-type: none"> <li>• 2 3/8" ID x 3 3/4" OD x 2" HT - Weight 0.03 lb</li> </ul>	<ul style="list-style-type: none"> <li>• For 2.5 to 8 HP engines</li> <li>• Fits models H25 thru 80, HS40 thru 50, V40 thru 80, LAV40 thru 50. For 2.5 thru 8 HP engines</li> </ul>	Tecumseh 30727 Rotary 1390 Stens 100-008 John Deere AM-30900 Cub Cadet 488619-R1

**WX-115**



Dimensional data & weight	Applications	Cross references
<ul style="list-style-type: none"> <li>• 2 3/4" W x 4 7/16" L x 2 3/8" HT - Weight 0.05 lb</li> </ul>	<ul style="list-style-type: none"> <li>• For 8 and 10 HP engines</li> <li>• Fits models VM80, HM80 and HM100.</li> </ul>	Tecumseh 33268 Rotary 2775 Stens 100-115 John Deere N49746 Oregon 30-100

**WX-222**



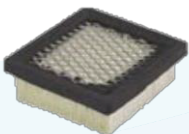
Dimensional data & weight	Applications	Cross references
<ul style="list-style-type: none"> <li>• 7/8" ID x 1 3/4" OD x 2 7/8" HT - Weight 0.01 lb</li> </ul>	<ul style="list-style-type: none"> <li>• For 3.5 and 4 HP vertical engines</li> <li>• Fits models TVS and ECV series and H35, Sears 1972 and newer with plastic canister</li> </ul>	Tecumseh 35066 Rotary 2784 Stens 100-222 Oregon 30-301 Laser 93069 Sears 10096, 35066, 63087A

**WX-909**



Dimensional data & weight	Applications	Cross references
<ul style="list-style-type: none"> <li>• 2" W x 8" L x 2 5/16" HT - Weight 0.06 lb</li> </ul>	<ul style="list-style-type: none"> <li>• For 8-13 HP engines</li> <li>• Fits models TVM195, TVLXL195, 200, OVXL120-125 and OHV125-130</li> </ul>	Tecumseh 35403 Rotary 2829 Stens 100-909 Oregon 30-111 Laser 93149 Prime Line 7-02256

**WPA-450**



Dimensional data & weight	Applications	Cross references
<ul style="list-style-type: none"> <li>• 3 7/16" W x 3 7/8" L x 1 1/4" HT - Weight 0.02 lb</li> </ul>	<ul style="list-style-type: none"> <li>• For Vector World engines, 4 and 5.5 HP</li> <li>• Fits models VLV 40 and 50</li> </ul>	Tecumseh 36046 Rotary 8330 Stens 100-450 Oregon 30-740 Laser 93153 Mowmore te 8330

### WX-895



Dimensional data & weight	Applications	Cross references
<ul style="list-style-type: none"> <li>• 7 1/8" L x 3 1/8" x HT x 2 3/4" W wide end (2" narrow end) - Weight 0.09 lb</li> </ul>	<ul style="list-style-type: none"> <li>• For 15 HP OHV Engine</li> <li>• For 15, 16 and 16.5 HP engines</li> </ul>	Tecumseh 36356 Rotary 7732 Stens 100-895 Oregon 30-024

### WX-317



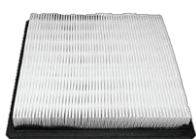
Dimensional data & weight	Applications	Cross references
<ul style="list-style-type: none"> <li>• 1 3/4" W x 2 3/4" L x 2 1/8" HT - Weight 0.02 lb</li> </ul>	<ul style="list-style-type: none"> <li>• For 5.5 HP Centura Engine</li> <li>• Fits 5.5 HP Centura engines</li> </ul>	Tecumseh 36745 Rotary 8785 Stens 100-317 Oregon 30-030 Mowmore TE8785

### WX-812



Dimensional data & weight	Applications	Cross references
<ul style="list-style-type: none"> <li>• 1 3/4" W x 2 3/4" L x 2 13/16" HT - Weight 0.02 lb</li> </ul>	<ul style="list-style-type: none"> <li>• For 4-1/2, 5 &amp; 5-1/2 HP Engines Tecumseh and Craftsman 65 models</li> <li>• Fits models LEV100, LEV115, LEV120, OVRM105, OVRM65, TVS115 and TVS120</li> </ul>	Tecumseh 36905 Rotary 9200 Stens 100-812 Oregon 30-031 Prime Line 7-08325

### WPA-1008-1



Dimensional data & weight	Applications	Cross references
<ul style="list-style-type: none"> <li>• 6 7/8" W x 7 1/4" L x 1 9/32" HT - Weight 0.06 lb</li> </ul>	<ul style="list-style-type: none"> <li>• Fits models OV691EA, TVT691 and VTX691</li> </ul>	Tecumseh 37360 Rotary 11473 Stens 102-450 Oregon 30-443

### WPA-412



Dimensional data & weight	Applications	Cross references
<ul style="list-style-type: none"> <li>• 3" W x 3" L x 7/8" HT - Weight 0.01 lb</li> </ul>	<ul style="list-style-type: none"> <li>• For 4 HP XL Series &amp; 4 HP, 2 cycle engines</li> <li>• Fits TVS840, TVSXL840, TVXL840. Also fits model TC200-300 engines.</li> </ul>	Tecumseh 429778, 450247 Rotary 2839 Stens NA

### WX-917



Dimensional data & weight	Applications	Cross references
<ul style="list-style-type: none"> <li>• 1 1/8" ID x 2 13/16" OD x 4 9/16" HT - Weight 0.06 lb</li> </ul>	<ul style="list-style-type: none"> <li>• For 8 HP Horizontal Engines.</li> <li>• Fits models HM70 thru 100</li> </ul>	Tecumseh 34700B Rotary 9533 Stens NA Oregon 30-142 Prime Line 7-02719



### WX-285

#### Dimensional data & weight

- 1 1/16" ID x 2 7/8" OD x 3 1/2" HT - Weight 0.05 lb

#### Applications

- For Snapper V-21 & Toro with 4 HP 2-Cycle Tecumseh Engines
- Fits models TVS840, TVXL105 thru 120, H50-70 and HH60-70

#### Cross references

- Tecumseh 34782B
- Rotary 6515
- Stens 102-285
- Oregon 30-141
- Mowmore TE15 Prime Line 7-02721



### WX-457

#### Dimensional data & weight

- 2 5/8" W x 5 1/16" L x 2 3/8" HT - Weight 0.04 lb

#### Applications

- For 4 HP vertical crankshaft engines
- Fits models VLV40

#### Cross references

- Tecumseh 35850A
- Rotary NA
- Stens NA

## TORO

### WPA-100-162

#### Dimensional data & weight

- 3" W x 6 1/8" L x 3 3/16" HT - Weight 0 lb

#### Applications

- For models ToroTimecutter with 42" and 50" decks and V-Twin engines
- Fits Loncin made 2 cylinder engines.

#### Cross references

- Toro 136-7802, 127-9252
- Rotary 15526
- Stens 100-162
- Exmark 127-9252, 136-7806



## WACKER

### WPA-100-500

#### Dimensional data & weight

- 3 3/4" W x 6" L x 3 1/4" HT - Weight 0.11 lb

#### Applications

- Fits models BS500-oi, BS500S, BS500, BS600-oi, BS600S, BS600, BS650, BS700-oi, BS700 and DS720

#### Cross references

- Wacker 0114792
- Rotary NA
- Stens 100-500
- HiFi SA 1987



### WPA-7193

#### Dimensional data & weight

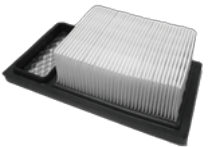
- 3 7/8" W x 6 11/16" L x 1 15/16" HT - Weight 0.05 lb

#### Applications

- For Wacker trench rammer BS50-2, BS60-2 and BS70-2

#### Cross references

- Wacker 0157193
- Rotary NA
- Stens 102-255
- HiFi SA 12334



### WPA-3062

#### Dimensional data & weight

- 4 15/16" W x 6 25/32" L x 2" HT - Weight 0.05 lb

#### Applications

- Fits models BS50-2I, BS60-2I, BS70-2I & BS60-4S

#### Cross references

- Wacker 5200003062
- Rotary NA
- Stens NA



## WEBER

### WPA-1237

#### Dimensional data & weight

- 1 19/32" ID x 4 9/16" OD x 3 1/32" HT - Weight 0.06 lb

#### Applications

- Fits SRV/SRX Stampfer / Rammer with Honda GX 100 & Robin EH12 Engine
- Fits models OV691EA, OV691EP, TVT691 and VTX691

#### Cross references

- Weber 02100458 & 041 000 757
- Rotary NA
- Stens NA
- M&H C 1237

